

✧ Package Contents

Please check the contents of your new Network IP Camera when you unpack the package. If any item is missing, please contact your dealer of purchase for help. The package includes the following items:

- Network IP Camera x 1ea
- Bundle NVR & CMS software CD x 1ea
- User manual x 1ea
- Cable cover x 1 ea
- Accessory package x 1 set.



→ Anchor 7x27 * 4 ea



→ Screw 4 x27 Tp1 Bnd Sus *4 ea



→ Hexagon wrench 3.0mm L type * 1 ea



→ Mount hole sticker * 1ea

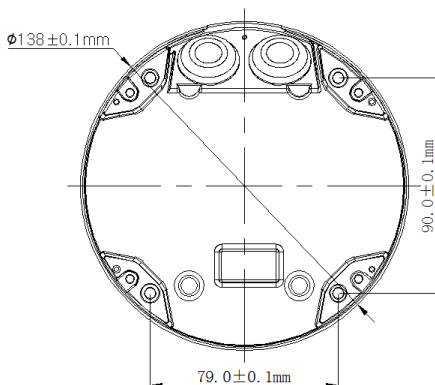
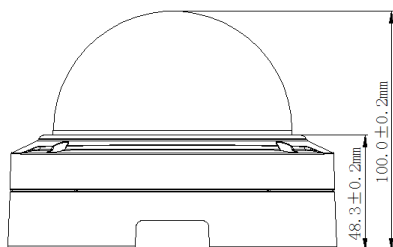


→ RJ-45 Female- Female Converter * 1ea (Optional)

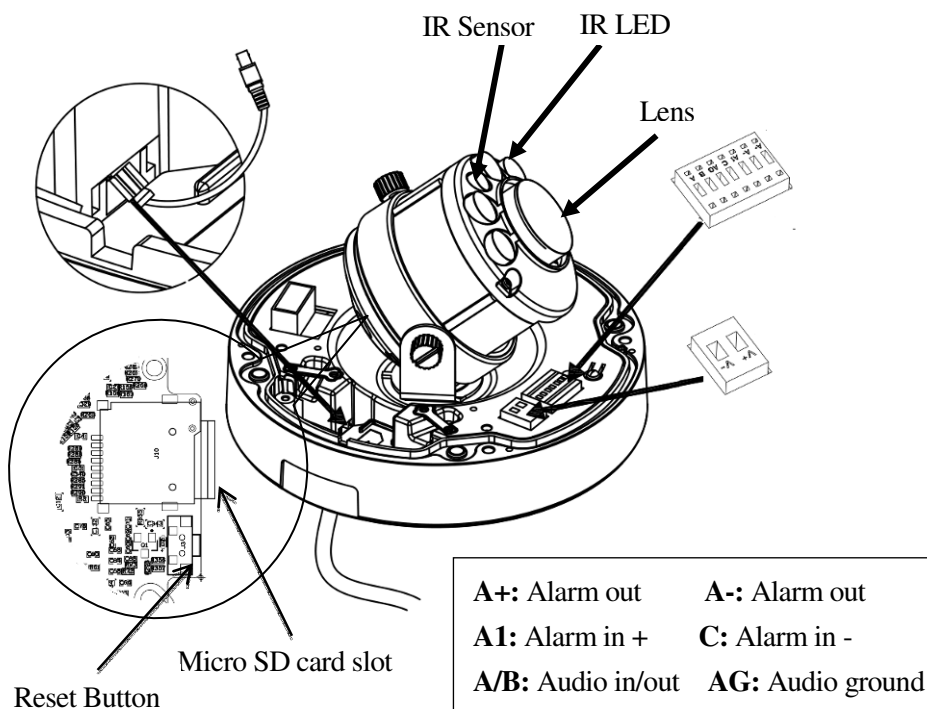
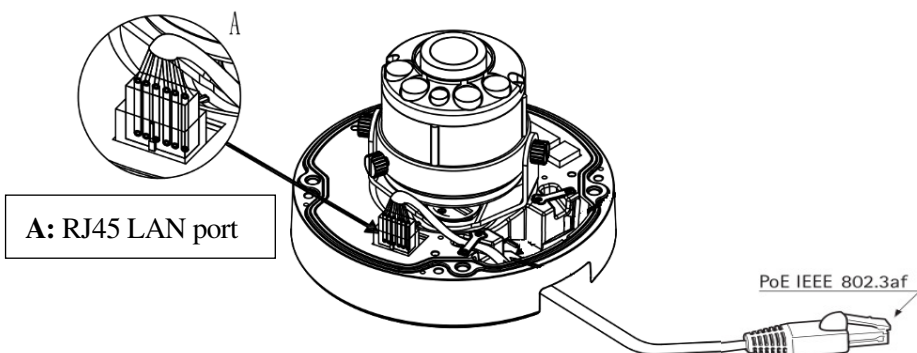


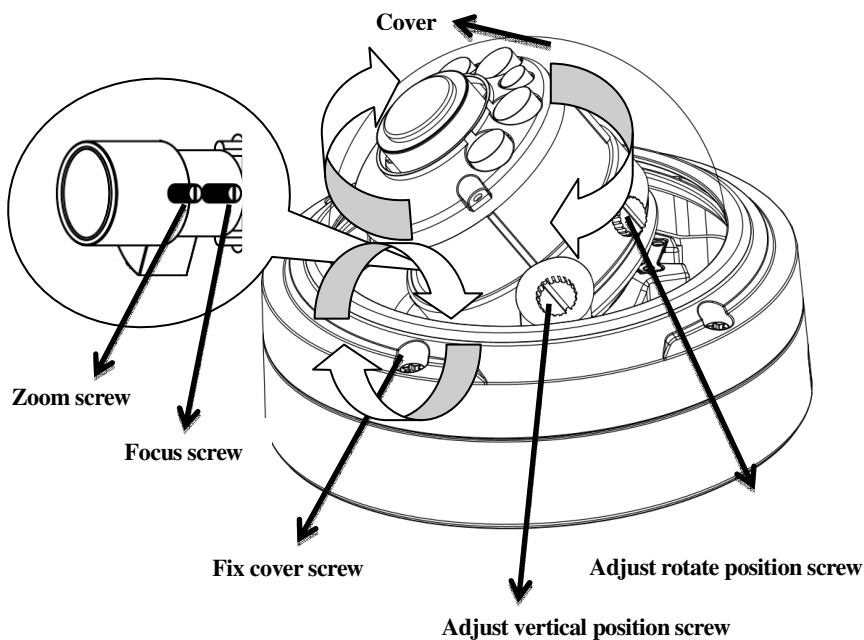
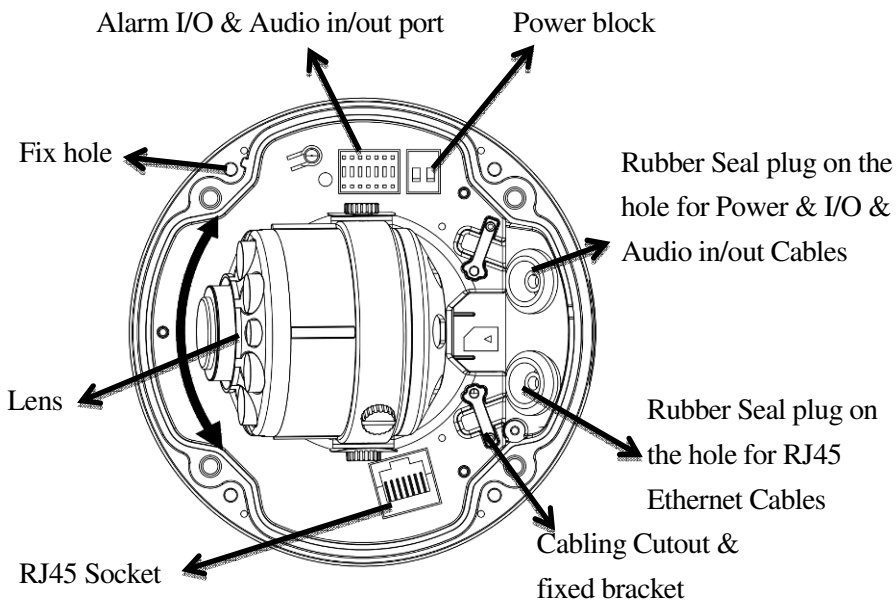
→ LAN Jumper * 1ea (Optional)

✧ Product Dimension



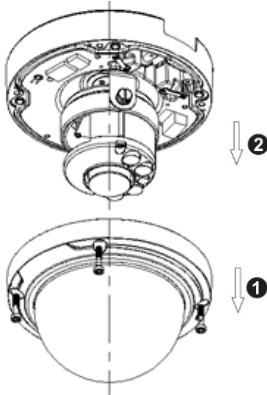
◇ Product Parts Description





Camera Installation

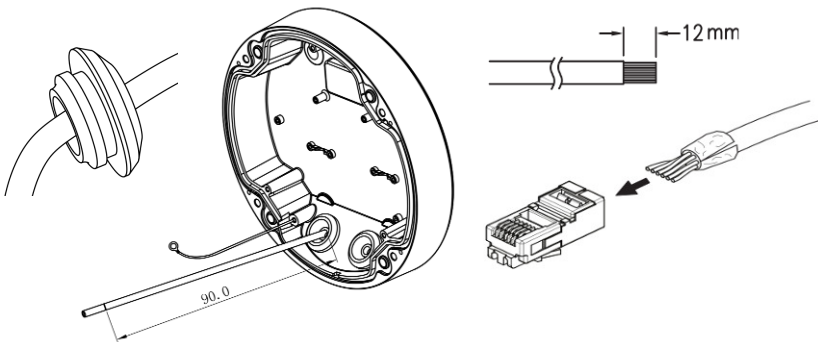
➤ Preparation – Remove the dome cover



1. Use the supplied security torx key to loosen (not remove) the three cover screws.
2. Loosen the three screws (marked with the triangle icon) on the dome base.
3. Remove the back case.

➤ LAN Cable assembly

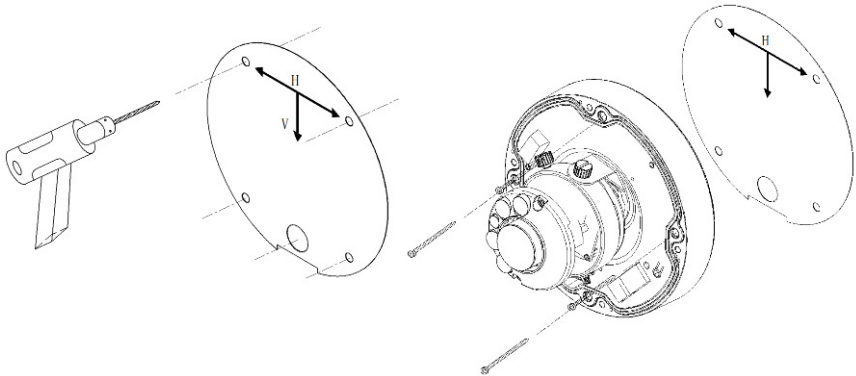
- 1) Drill a hole on the rubber seal plug and insert an Ethernet cable through the opening.
- 2) Strip part of the sheath from the Ethernet cable.
- 3) You will need an RJ45 crimping tool to attach the Ethernet wires to a connector. When done, connect the cable to the camera's Ethernet RJ45 socket.



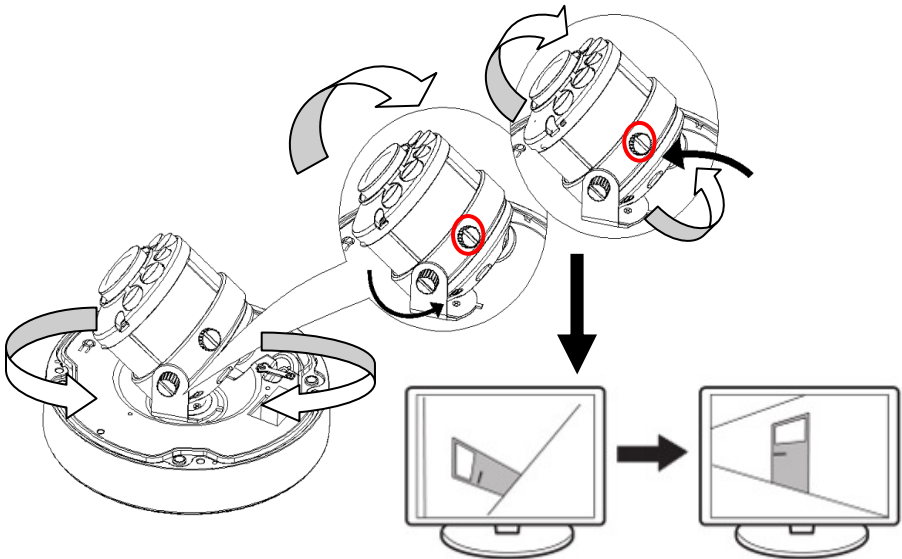
➤ Fix the camera on the Ceiling & Wall

- 1) Paste the Mount hole sticker on the position that you want to install.
- 2) According to your needs, create 6mm (0.2") holes at the T1/T2 template positions. Then insert the screw anchors into the holes. If you want to feed wiring from the hole on the top of the back case,

create a circular opening (bottom conduit hole) in the mounting surface.



- 3) Press the Ethernet cable into the routing path at the bottom of the camera so that the cable will not get in the way when the metal mounting plate is attached, and then arrange these cables through the hole of ceiling or wall.
- 4) Align the back case and the lens base, and then fasten the TP4 screws into the inserted anchors.
- 5) Adjust the focusing position by rotating and panning the camera base. Note that the back case side conduit hole is the point where the camera will not rotate past.
- 6) Fix the cover to finish the camera installation.

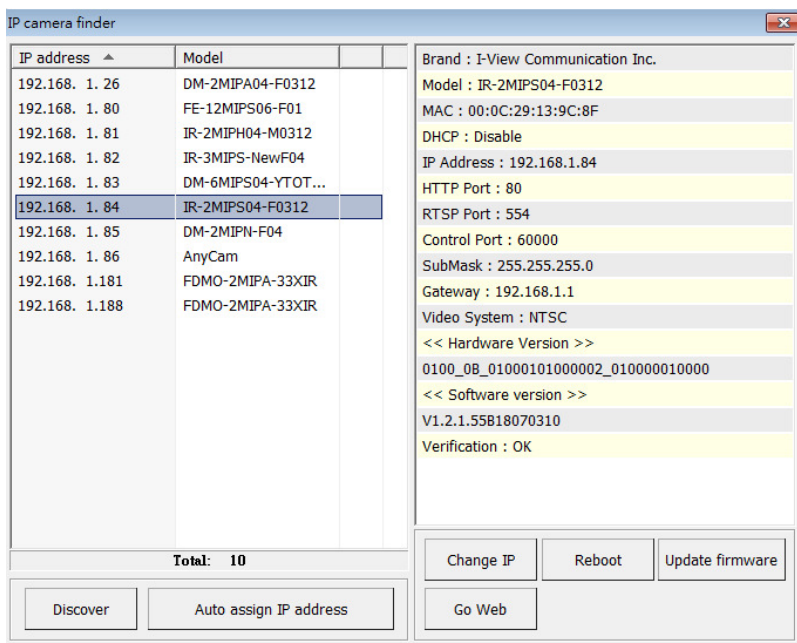


✧ Accessing IP Camera via IE, Chrome, Safari and Firefox Browser

You can use your new Network IP Camera by its web user interface via IE, Chrome, Safari and Firefox.

You must know the IP address of IP Camera before you can connect to it. The IP Camera will use DHCP server on your local network to obtain an IP address automatically by default. So, you can check your DHCP server's IP address lease table to find the IP address of IP Camera or also can use the utility program '**IP Camera Finder.exe**' to find the IP address, which is come with the CD. Follow up the processes to find out the IP address of IP camera by IP Search utility as below.

Step 1. Click "**IP Camera Finder.exe**" program will show the window as below.



Step 2. Press "**Discover**" button to search for all IP Cameras on your local network.

Step 3. If you need to change IP address, double click the Mouse on the selected IP Camera and then change the IP address and Gateway IP, then click the "**OK**" button to save the setting.

Step 4. If you no longer need to use this utility, click "**X**" button to close it.



The default User name / Password is "**admin / 123456**" and IP address is 192.168.0.123.




Make sure all IP Cameras are powered on and connect to local network first.



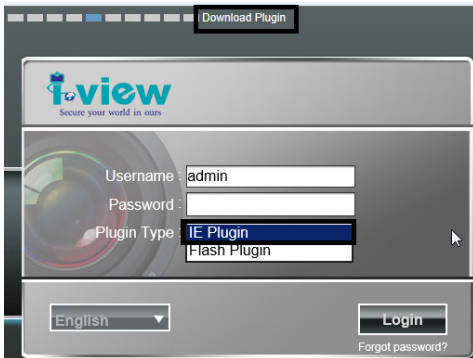
If you have several network connections, please disable connections that are not connected to IP camera, otherwise the IP Search Tool.exe program may fail to search IP camera.

❖ Install Plug-in on IE, Chrome, Safari and Firefox Browser |

You can connect to the IP camera by Internet Explorer or other web browsers for remote viewing by entering IP address in address bar. When you connect to IP Camera, the use login screen will appear when you get connected. Please entry the user name / password to login. Continue pressing the  icon will show the text of password.



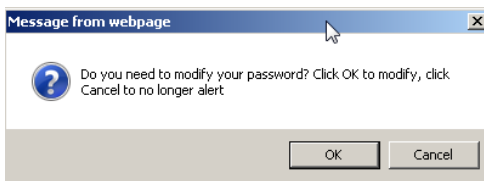
The default User name / Password is “**admin / 123456** “ and IP address is 192.168.0.123



If you connect to IP Camera first time from IE or Chrome, Safari and Firefox Browser, please follow up the process as below:

1. Please select the “**IE Plugin** “ from “**Plugin Type**” section when you want to access IP camera via IE Browser. Select the “**Flash Plugin** “ from “**Plugin Type**” section when you want to access IP camera via Chrome, Safari and Firefox Browser.
2. Please click “**Download Plugin**”. (Please refer the above photo).
3. Download the Plug in and double click to install the program.
4. Please turn off the Browser when you install the Plugin program.
5. Turn on the Browser when the Plugin program install completely.
6. Entry the IP, user name , password to access the IP camera.

7. For security reason, it will pop up change password message when you log in and pass the checking. Click "Ok" to set up a new password for next time login, press "Cancel" icon to ignore this message.



✧ Using RTSP Players

To view the video streaming media using RTSP players, you can use one of the following players that support RTSP streaming such as Quick Time Player, Real Player, VLC media player



The RTSP command code as below:

Main streaming: RTSP://User name:Password@ IP Address: RTSP Port /ch01.264

Sub streaming: RTSP://User name:Password@IP Address:RTSP Port/ch01_sub.264

Third streaming: RTSP://User name:Password@IP Address:RTSP Port/ch01_third.264

For example: rtsp://admin:123456@192.168.1.185:554/ch01.264 (Main streaming)

✧ Install NVR software

You can use your new Network IP Camera by its web user interface on a PC. There is a NVR software CD comes with IP camera which allow you run 32/64 channels IP cameras and refer the detail Web GUI operation manual of IP camera.

✧ Setting IP camera

Click “Start “>> “ All Programs” >>

“Witness NVR32/64 Pro”, then select

the “ Video Parameters setup-ezSetup”

accessory program to setup the

parameters.

For its installation details, please refer to its related documents.

