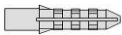


✧ Packaging Contents

Check the contents of your new Network IP Camera when you unpack the package. If any item is missing, please contact your dealer of purchase for help. The package includes items as below:

- IP Speed Dome Camera x 1 ea
- Bundle NVR & CMS software CD x 1ea
- User Quick manual x 1ea
- DC24V Switching Power Adapter x 1 ea
- Installation Glove x 1sets
- Wall mount bracket or Ceiling Bracket x1set
- Safety Wire x 1pc
- Accessory package x 1 set.



➔ Anchor 7x27 * 4 ea



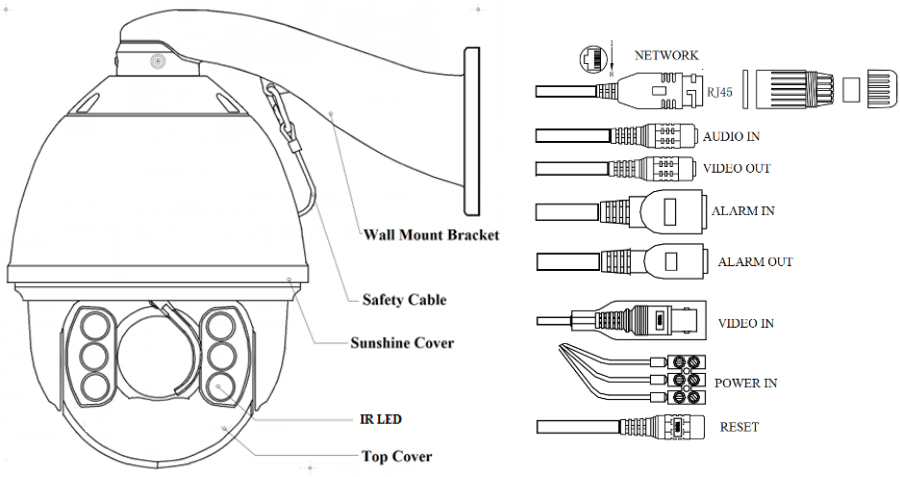
➔ Screw 4 x27 Tp1 Bnd Sus *4 ea

✧ Before start to use the IP Speed dome camera

Please follow up the process as below before to start to us.

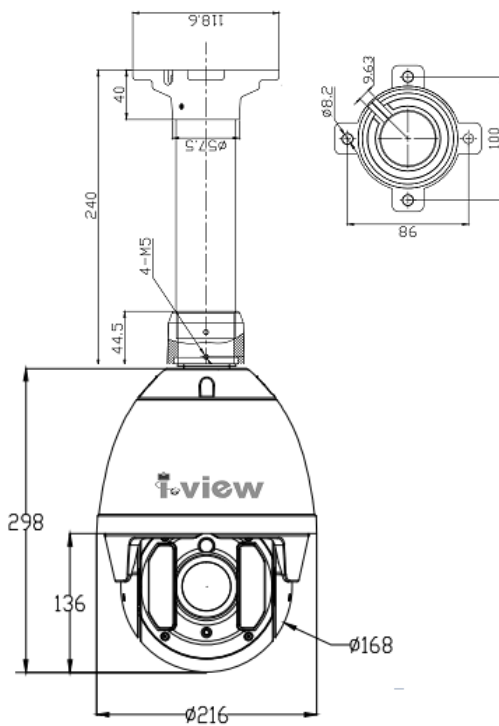
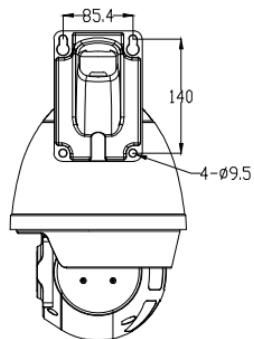
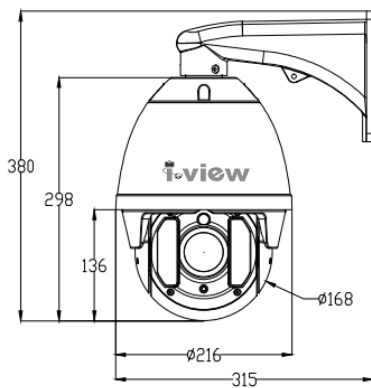
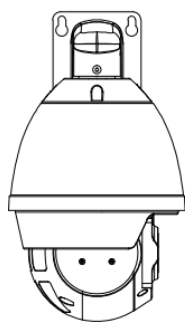
1. Uppack the protect tape from the body of PTZ Dome camera first.
2. Remove the protect tape from the window of Lens.
3. Check the accessories parts.
4. Connect related cables according to actual need (Power line, network line, audio line etc.)
5. Please read the Note carefully, any question you should contrast us without hesitation.
6. Please read the user manual carefully before the installation.
7. Make sure to turn off all the power when install the camera
8. Please confirm the power transformer, avoid the device damage with unmatched power source
9. Connect the power supply to turn on the power.

❖ Parts Function Description



- 1) **Network port:** Plug the RJ-45 LAN cable. This port support water proof tube and comes with the POE+ power source.
- 2) **Audio input:** Plug in Microphone for audio input (Red RCA port).
- 3) **Audio output:** Plug Speaker (Request audio amplify) for audio output. (White RCA port).
- 4) **Alarm in #1:** Connect to the sensor input (Dry contact). Alarm in - (Pin 1); Alarm in + (Pin 2)
- 5) **Alarm in #2:** Connect to the sensor input (Dry contact). Alarm in - (Pin 4); Alarm in + (Pin 3)
- 6) **Alarm out:** Connect to the trigger device such as light.
- 7) **Video out:** Composite video single output.
- 8) **Power in:** DC24V Power input. Please make sure the voltage polarity (Red wire: DC24V+, Black wire: DC24V-, Yellow wire: Surge point) when you plug the DC 24V power adapter.
- 9) **Reset:** Press 20 seconds the reset button and the camera parameters will become to default.

✧ Product Dimension

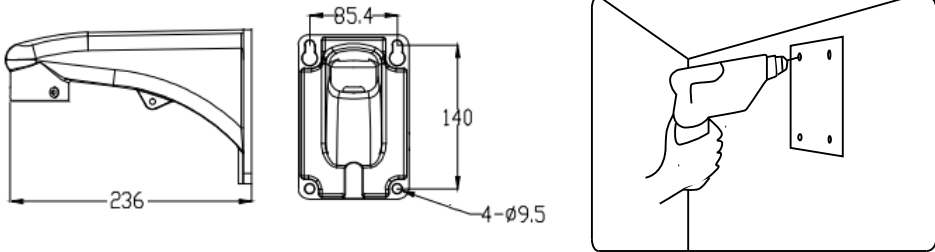


✧ Installation Method

The IR speed dome could be installed in wall-mount and pedant-mount

➤ Wall-mount Installation Procedures:

- 1) Take out the Junction Box from the package (as shown), mark the installation hole positions on the wall referencing to the bottom of bracket.
- 2) Drill the hole and install 4 pieces of M8 expansion bolt into the hole.

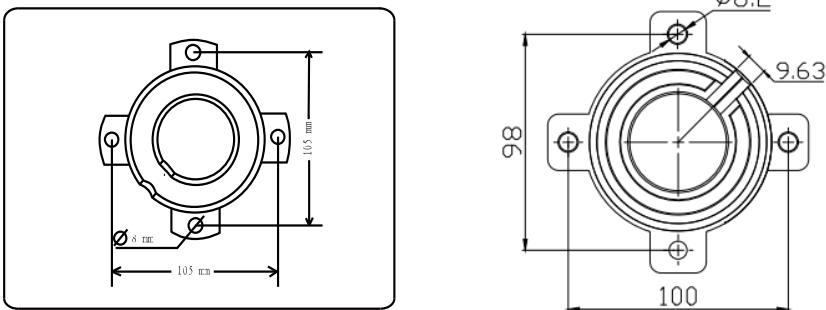


The wall and ceiling must be thick enough to install the expansion bolts and can bear 4 times the weight of the dome camera itself.

- 3) Take out the IR speed dome and put the cables through the bracket.
- 4) Use M5 screws to fix the bracket and dome body.
- 5) Use 4 pieces of M8 screw nuts with washer to fix the junction box on the wall.

➤ Pendant-mount Installation Procedures:

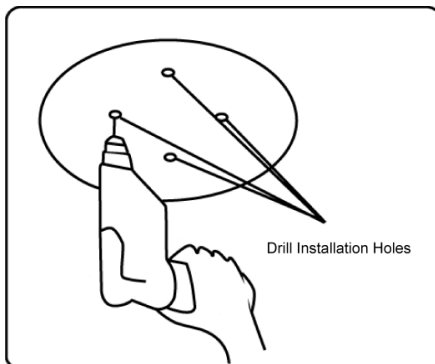
- 1) Take out the bracket from the package (as shown), mark the installation hole positions on the ceiling referencing to the bottom of bracket.



2) Drill the hole and install 4 pieces of M8 expansion bolt into the hole.

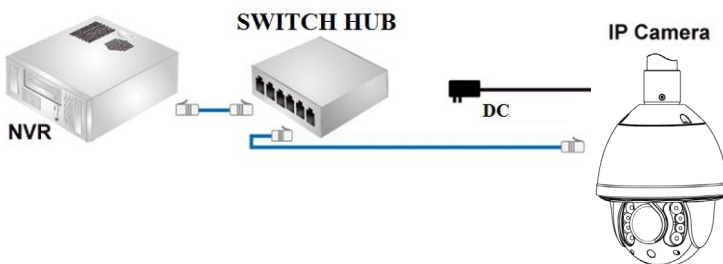
3) Take out the IR speed dome and put the cables through the sockets on the bottom of the pendant bracket. Use M5 screws to fix the bracket and dome body.

4) Use screw nuts with washer to fix the bracket on the wall. Pendant-bracket is not designed for outdoor installation. If specially required, please do make sure the waterproof installation of the dome.



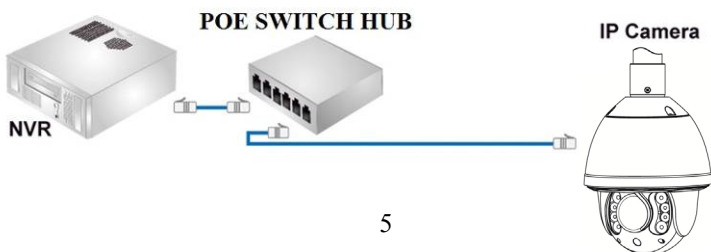
✧ Network Deployment

General Connection (without PoE)



1. Connect RJ45 Ethernet cable to a switch. Use a Category 5 Cross Cable when your network camera is directly connected to PC.
2. Connect the power cable from the Network Camera to a power outlet.
3. If you have external devices such as sensors and alarms, make the connection from the general I/O terminal block

➤ Power over Ethernet (IEEE802.3at)



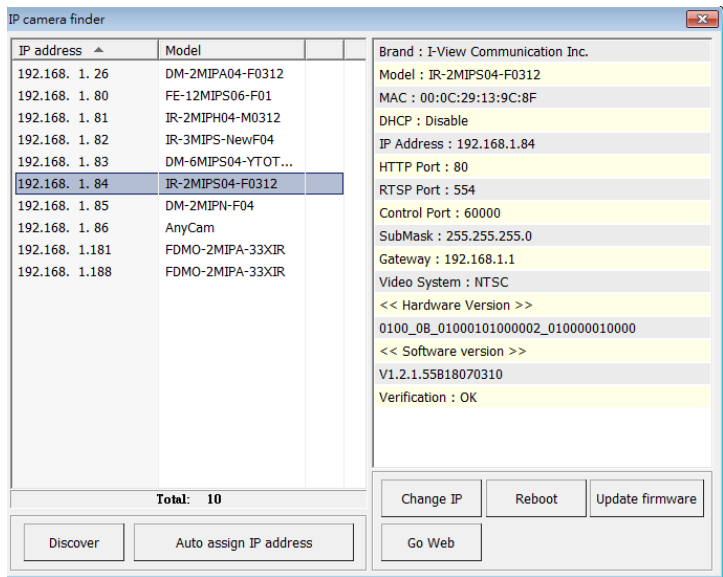
The IR PTZ Network Camera is not PoE-compliant, allowing transmission of power and data via a single Ethernet cable via i-View Poe+. Follow the above illustration to connect the Network Camera to a PoE+ device and then to the switch via Ethernet cable. (Optional)

✧ **Accessing IP Camera via IE, Chrome, Safari and Firefox Browser**

You can use your new Network IP Camera by its web user interface via IE, Chrome, Safari and Firefox.

You must know the IP address of IP Camera before you can connect to it. The IP Camera will use DHCP server on your local network to obtain an IP address automatically by default. So, you can check your DHCP server’s IP address lease table to find the IP address of IP Camera or also can use the utility program ‘**IP Camera Finder.exe**’ to find the IP address, which is come with the CD. Follow up the processes to find out the IP address of IP camera by IP Search utility as below.

Step 1. Click “**IP Camera Finder.exe**” program will show the window as below.



Step 2. Press “**Discover**” button to search for all IP Cameras on your local network.

Step 3. If you need to change IP address, double click the Mouse on the selected IP Camera and then change the IP address and Gateway IP, then click the “**OK**” button to save the setting.

Step 4. If you no longer need to use this utility, click “**X**” button to close it.



The default User name / Password is “**admin / 123456** “ and IP address is 192.168.0.123.




Make sure all IP Cameras are powered on and connect to local network first.



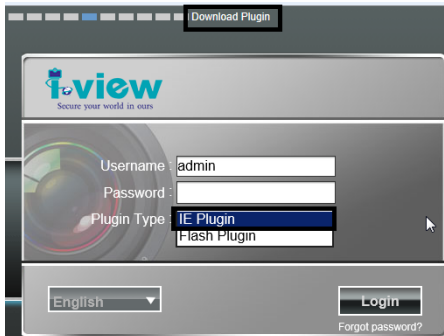
If you have several network connections, please disable connections that are not connected to IP camera, otherwise the IP Search Tool.exe program may fail to search IP camera.

✧ Install Plug-in on IE, Chrome, Safari and Firefox Browser |

You can connect to the IP camera by Internet Explorer or other web browsers for remote viewing by entering IP address in address bar. When you connect to IP Camera, the use login screen will appear when you get connected. Please entry the user name / password to login. Continue pressing the  icon will show the text of password.



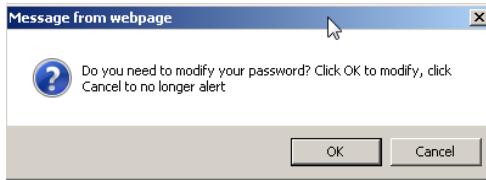
The default User name / Password is “**admin / 123456** “ and IP address is 192.168.0.123



If you connect to IP Camera first time from IE or Chrome, Safari and Firefox Browser, please follow up the process as below:

1. Please select the “**IE Plugin** “ from “**Plugin Type**” section when you want to access IP camera via IE Browser. Select the “**Flash Plugin** “ from “**Plugin Type**” section when you want to access IP camera via Chrome, Safari and Firefox Browser.
2. Please click “**Download Plugin**”. (Please refer the above photo).
3. Download the Plug in and double click to install the program.
4. Please turn off the Browser when you install the Plugin program.
5. Turn on the Browser when the Plugin program install completely.
6. Entry the IP, user name , password to access the IP camera.

7. For security reason, it will pop up change password message when you log in and pass the checking. Click "Ok" to set up a new password for next time login, press "Cancel" icon to ignore this message.



✧ Using RTSP Players

To view the video streaming media using RTSP players, you can use one of the following players that support RTSP streaming such as Quick Time Player, Real Player, VLC media player



The RTSP command code as below:

Main streaming: RTSP://User name:Password@ IP Address: RTSP Port /ch01.264

Sub streaming: RTSP://User name:Password@IP Address:RTSP Port/ch01_sub.264

Third streaming: RTSP://User name:Password@IP Address:RTSP Port/ch01_third.264

For example: rtsp://admin:123456@192.168.1.185:554/ch01.264 (Main streaming)

✧ Install NVR software

You can use your new Network IP Camera by its web user interface on a PC. There is a NVR software CD comes with IP camera which allow you to run 32/64 channels IP cameras and refer the detail Web GUI operation manual of IP camera.

✧ Setting IP camera

Click “Start” >> “All Programs” >>

“Witness NVR32/64 Pro”, then select the “Video Parameters setup-ezSetup” accessory program to setup the parameters.

For its installation details, please refer to its related documents.

