

✧ Join to the same Network Group (Via Software)

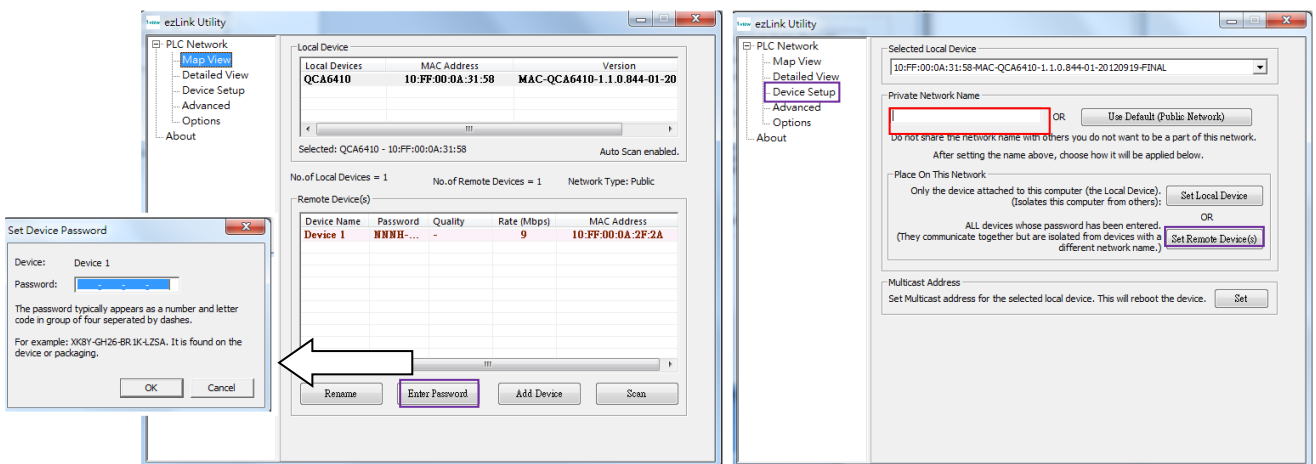
If there are more than 2 sets EPOC-131VA(J/T) product series to connect a switch Hub, maybe you need to setup the **Network Group** to provide utmost signal integrity and security; the Receiver must be configured to communicate exclusively with other transmitters within their own **Network Group**.

This process is called Joining. It is recommended that transceivers in each Network Group be configured prior to deployment using these instructions when there is more than one Network Group.

1. Please download the **Join group.rar** software from http://www.i-view.com.tw/Join_Group.rar and then decompress the program. Click the “**Setup.exe**” file to install the program into the PC.
2. Connect the PC and EPOC-131VA(J/T) devices on the same switch Hub, then connect the EPOC-131VA(J/T) and EPOC-131PS(J/T) via a short Coaxial or LAN or -2Wire cable. If the Switch Hub cannot support the PoE function that you need to plug the DC48V/56V power adapter on EPOC-131VA(J/T).



3. Verify that green Link LED of each device is ON, these devices had been previously joined in factory.
4. Run the **EzLink Utility** program, then the program will find out the device. Click the “**Map View**” tab that you will find out all the device(s). Click “**Add Device**” icon to select the device(s) to join a group. Maximum 4 transmitter devices at the same Network Group.
5. Select the device and click “**Enter password**” icon to entry the password and then click “**Ok**” to completely the setting. **You can find out the password label from device.**
6. Click “**Device Setup**” tab; then entry the name into the “**Private Network Name**” tab and then click the “**Set Remote Device(s)**” icon to finished the join group setting. The device(s) will reboot after click this icon. The setting diagram will show as below:



7. Verify that the green Link LED on each device is on after finished the join group process.
8. Label the configured devices with a unique Network Group ID of your choice; it will help you identify them after they have been deployed.